



House - End Terrace (EPC Rating: )

# 7 SWEETHILL WALK, BELLSHILL, ML4 1TE

Offers over

## £149,995

### FEATURES

- 2 double bedrooms
- Bright & airy throughout
- Multiple storage cupboards
- Located in Bellshill
- End terrace house
- Open plan kitchen diner
- Large rear garden
- Viewing recommended



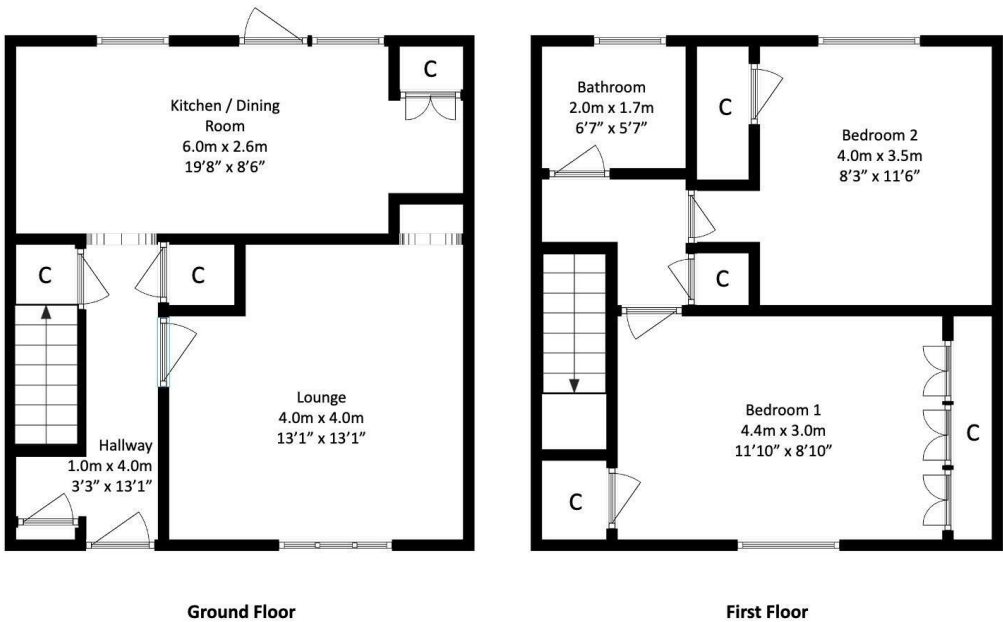
# 2 Bedroom House - End Terrace located in Bellshill

Located within the popular Sweetthill Walk area of Bellshill, this well-presented end-terrace home offers a practical and comfortable layout that will appeal to both first-time buyers and those looking to downsize.

The ground floor is bright and welcoming, with a spacious living room enhanced by a bay window, allowing natural light to flood the space. This creates an airy setting that works equally well for everyday living or hosting friends and family.

To the rear, the open-plan kitchen and dining area forms a sociable hub of the home, ideal for relaxed meals and entertaining. Thoughtfully planned, the property benefits from excellent storage throughout, with multiple well-positioned cupboards ensuring everyday items can be neatly stored away without compromising on living space.

Upstairs, the accommodation continues with two well-proportioned double bedrooms, each offering flexibility for bedroom, guest room, or home office use. The shower room completes the upper level, finished to suit contemporary living.



Call us on  
**07717504350**  
[sales@sweet-home.co.uk](mailto:sales@sweet-home.co.uk)  
<https://sweet-home.co.uk/>

Council Tax Band  
**B**

Energy Efficiency Rating		
	Current	Potential
Very energy efficient - lower running costs		
(92 plus) <b>A</b>		
(81-91) <b>B</b>		
(69-80) <b>C</b>		
(55-68) <b>D</b>		
(39-54) <b>E</b>		
(21-38) <b>F</b>		
(1-20) <b>G</b>		
Not energy efficient - higher running costs		
<b>Scotland</b>	EU Directive 2002/91/EC	

Agents Note: Whilst every care has been taken to prepare these particulars, they are for guidance purposes only. All measurements are approximate and are for general guidance purposes only and whilst every care has been taken to ensure their accuracy, they should not be relied upon and potential buyers are advised to recheck the measurements.

